

Esri, Garmin, GEBCO, NOAA NGDC, and other contributors, Sources: Esri, HERE, Garmin, GEBCO, National Geographic, NOAA, and the GIS User Community

ACPARS Fairways
 Type

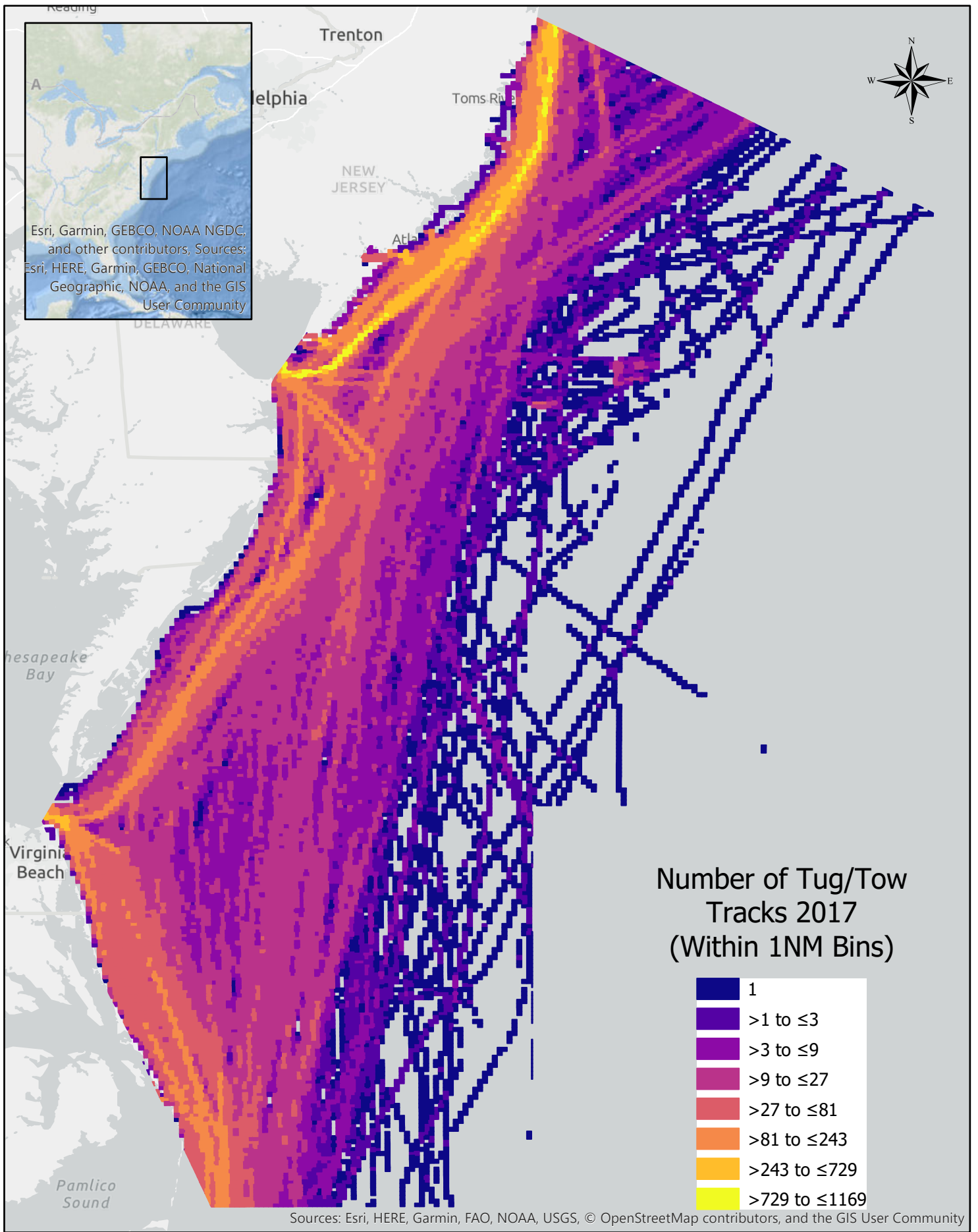
- █ Deep Draft Lane
- █ Tug Tow Extension
- █ Tug Tow Lane
- █ TugTowStudyArea

Sources: Esri, HERE, Garmin, FAO, NOAA, USGS, © OpenStreetMap contributors, and the GIS User Community

Coordinate System: GCS WGS 1984
 Datum: WGS 1984
 Units: Degree
 Prepared by the CG NAVCEN

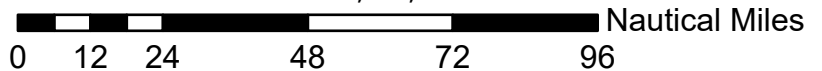
Scale: 1:3,622,057

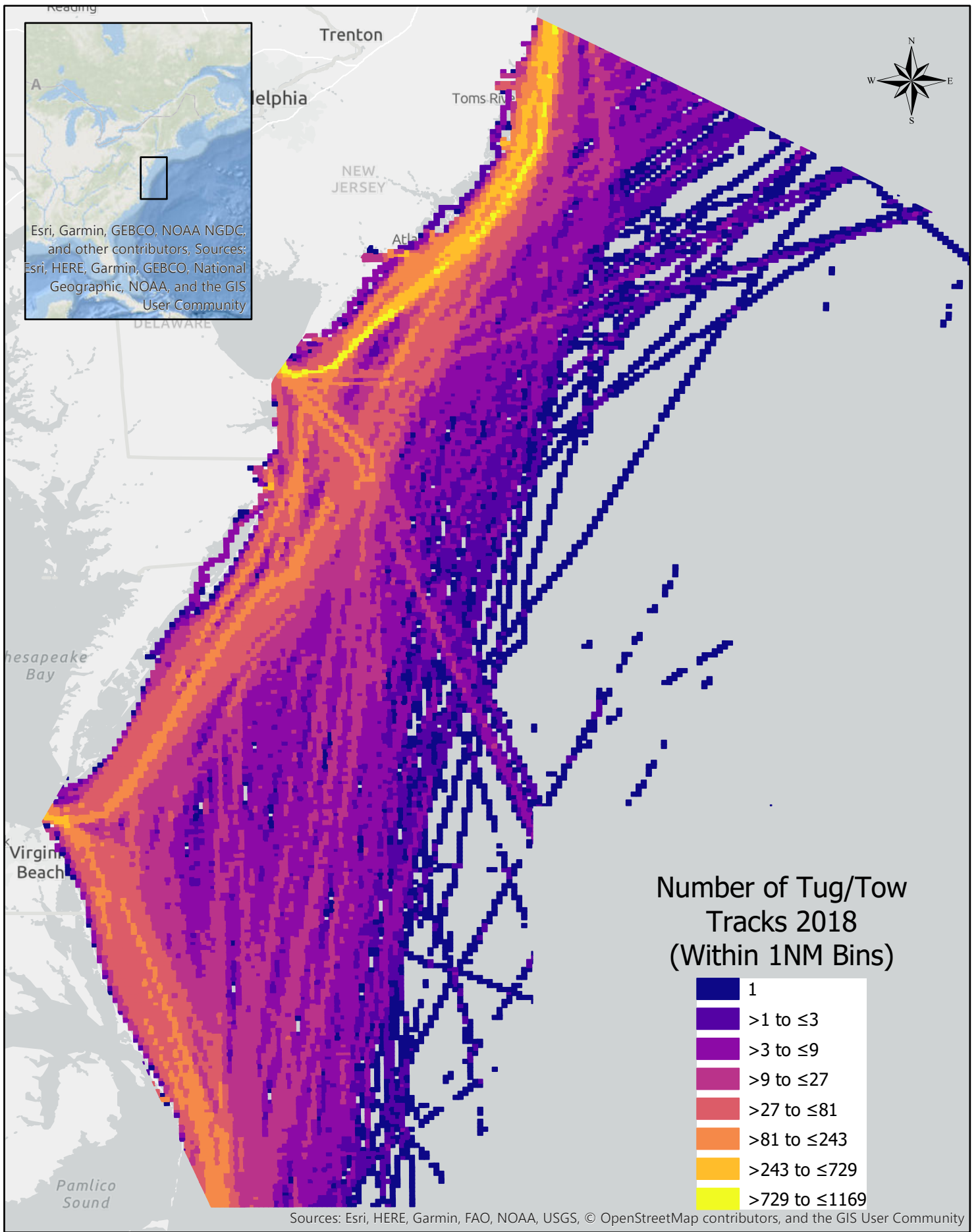
0 19 38 76 114 152 Nautical Miles



Coordinate System: GCS WGS 1984
 Datum: WGS 1984
 Units: Degree
 Data Source: NAIS
 Prepared by the CG NAVCEN

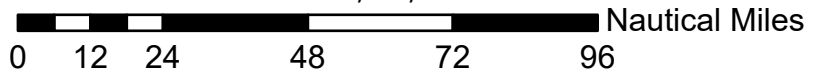
Scale: 1:2,318,117

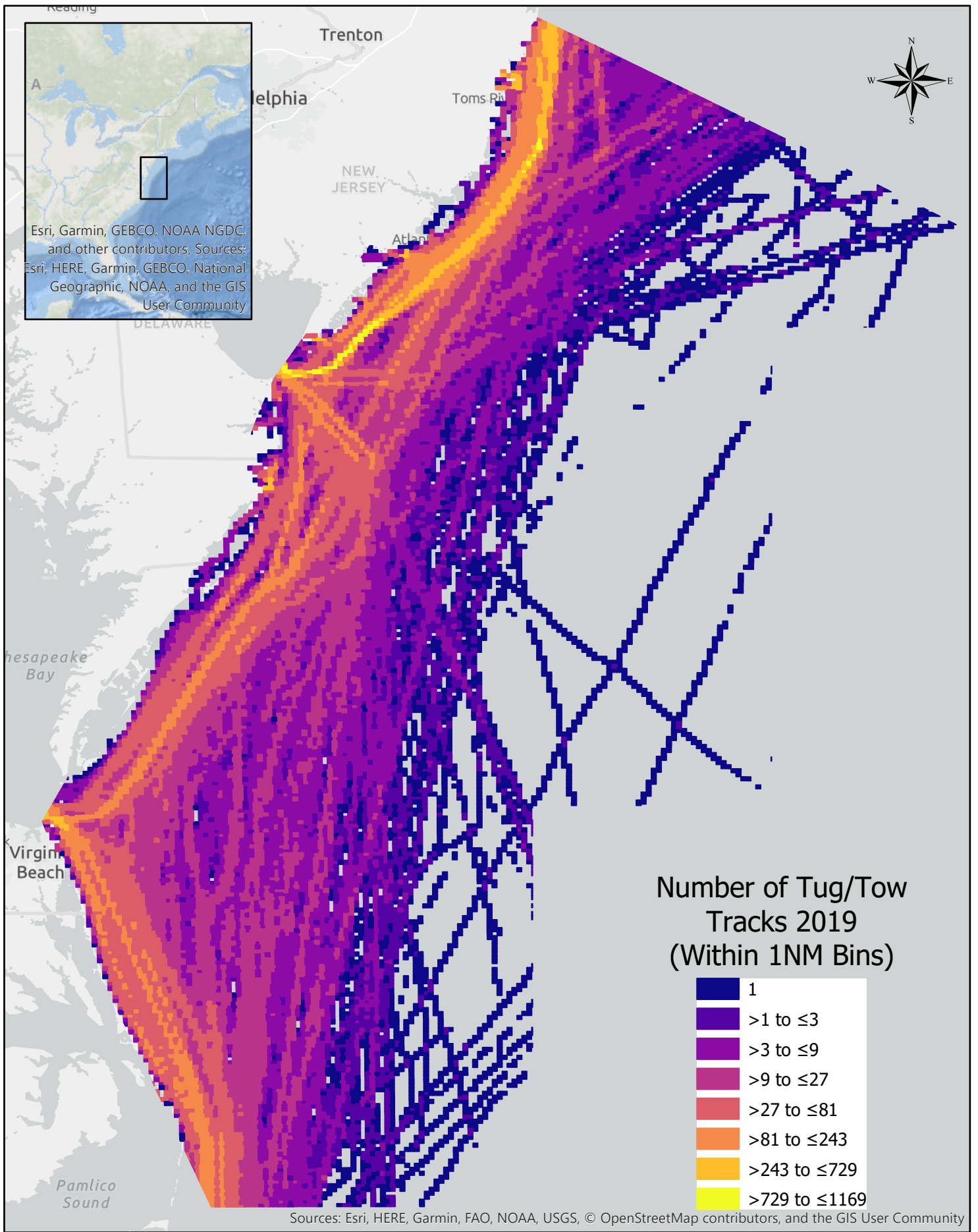




Coordinate System: GCS WGS 1984
 Datum: WGS 1984
 Units: Degree
 Data Source: NAIS
 Prepared by the CG NAVCEN

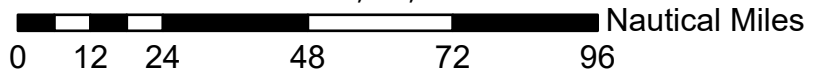
Scale: 1:2,318,117

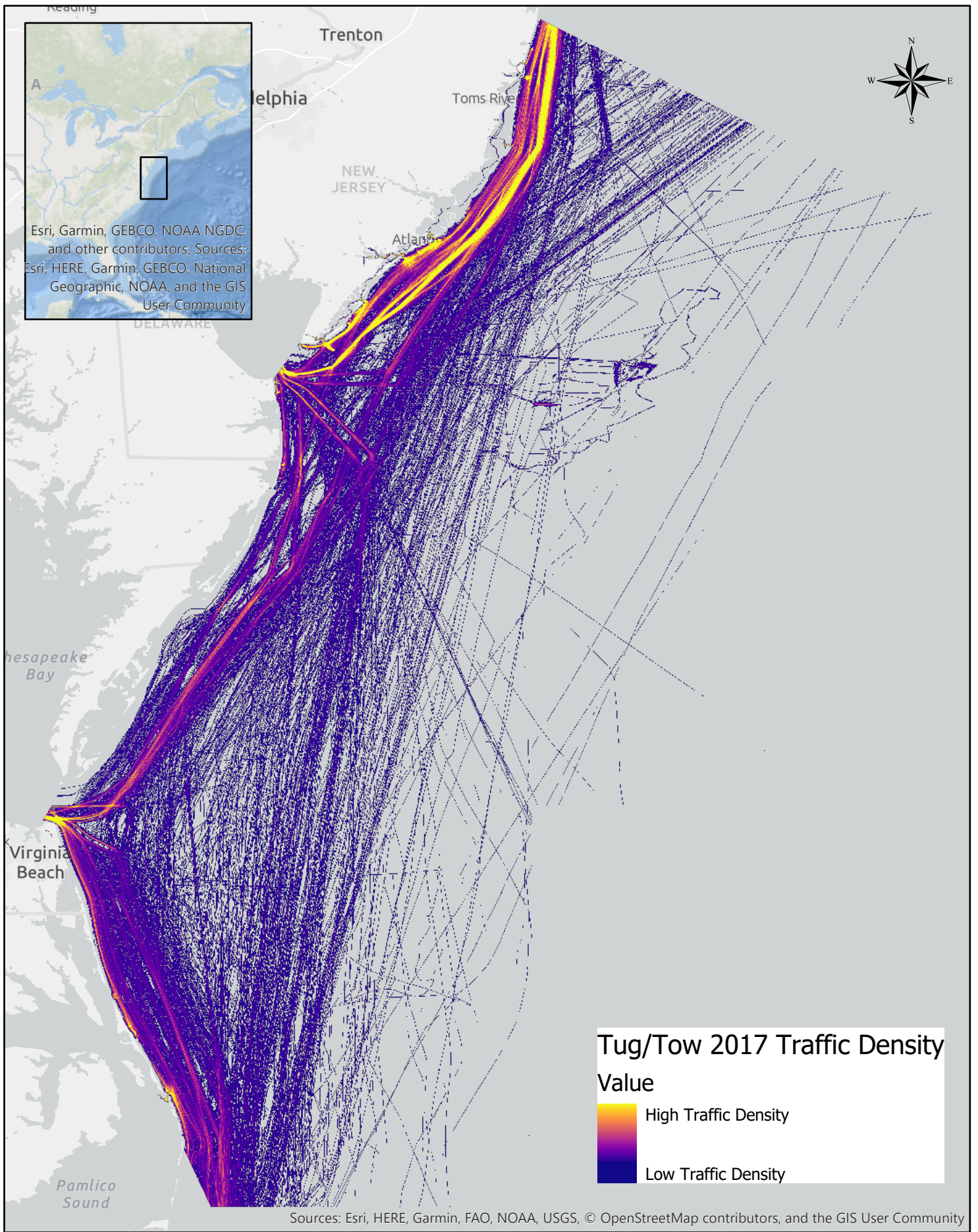




Coordinate System: GCS WGS 1984
 Datum: WGS 1984
 Units: Degree
 Data Source: NAIS
 Prepared by the CG NAVCEN

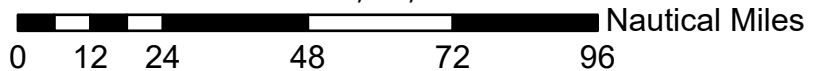
Scale: 1:2,318,117

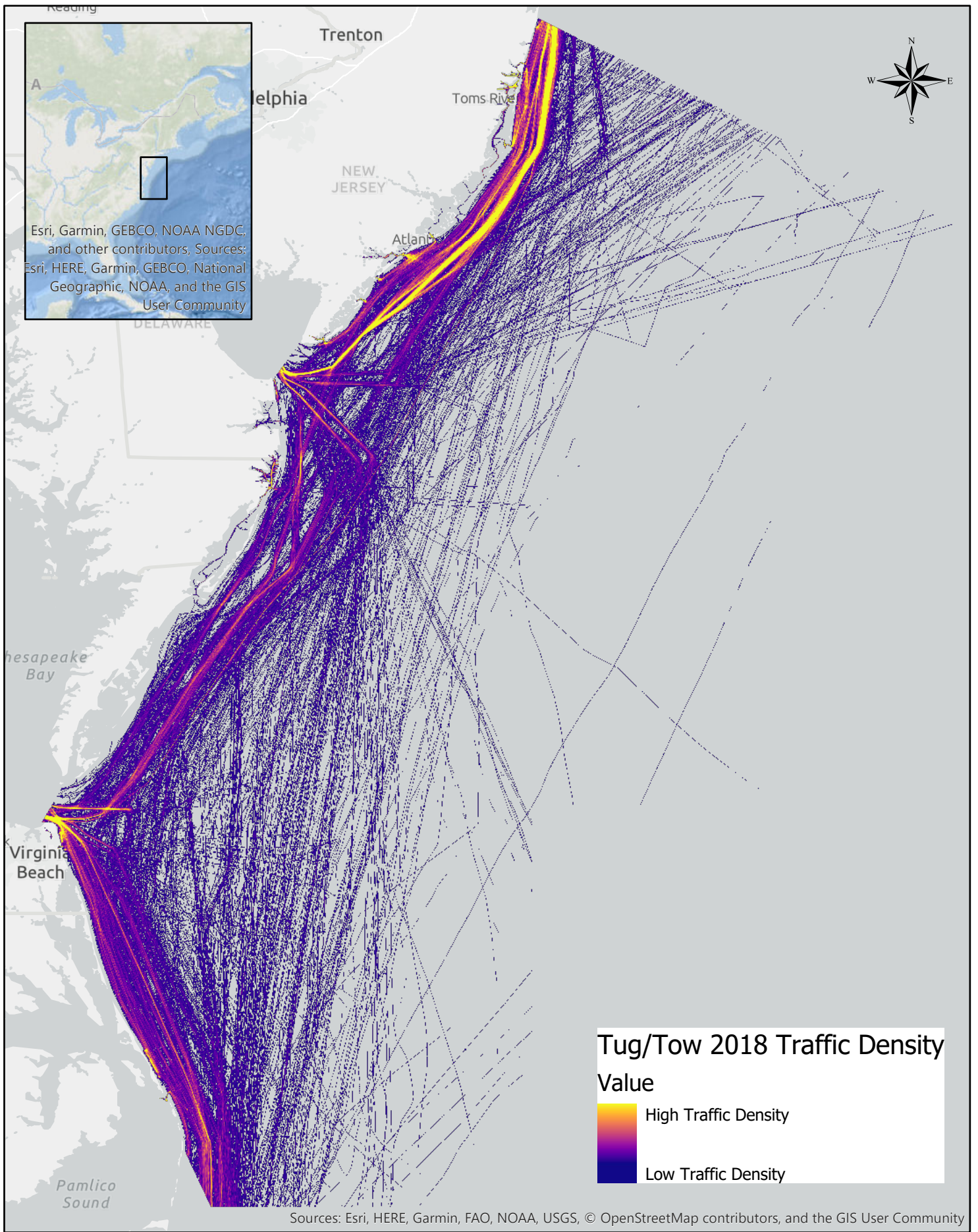




Coordinate System: GCS WGS 1984
 Datum: WGS 1984
 Units: Degree
 Data Source: NAIS
 Prepared by the CG NAVCEN

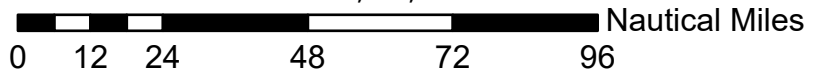
Scale: 1:2,318,117

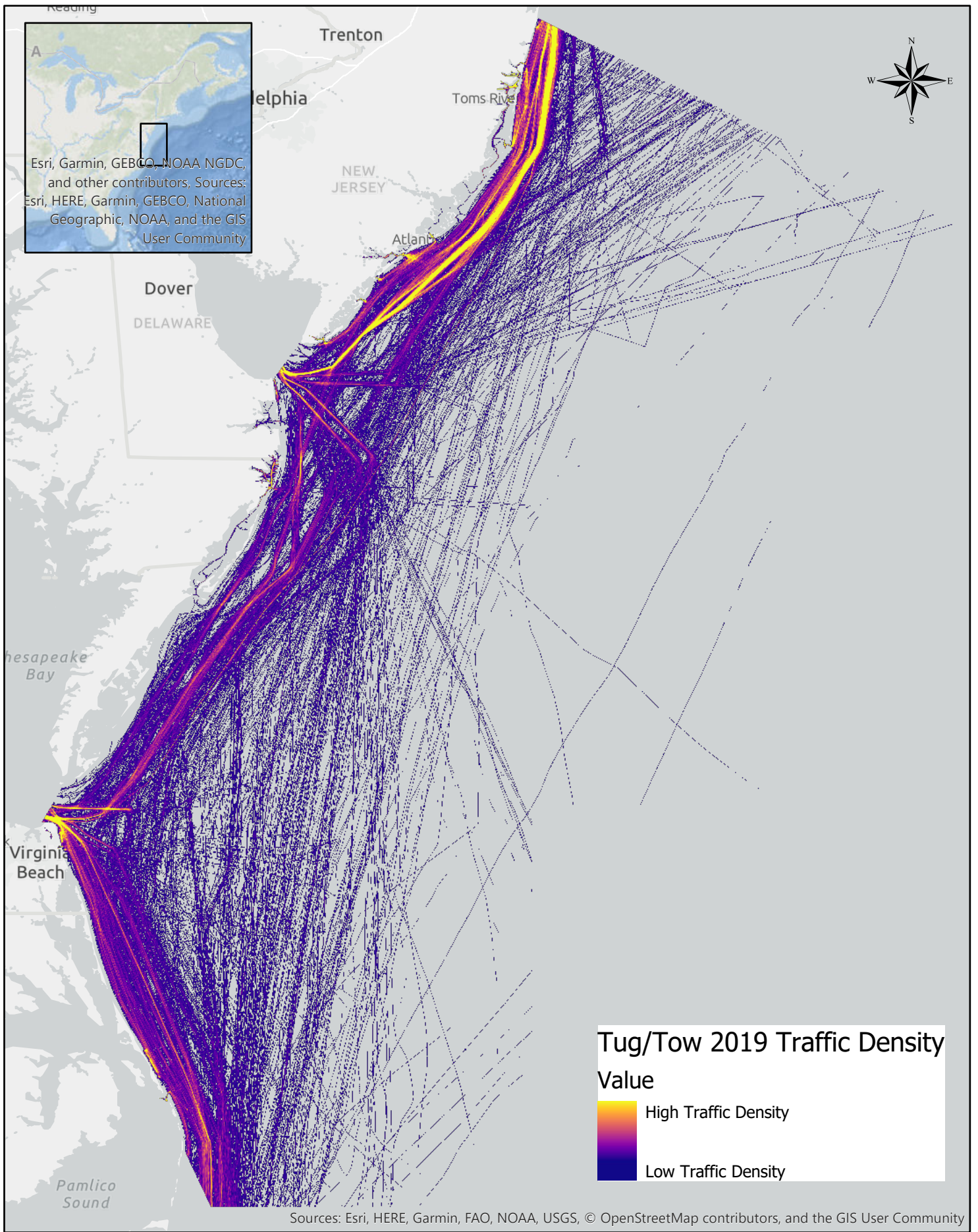




Coordinate System: GCS WGS 1984
 Datum: WGS 1984
 Units: Degree
 Data Source: NAIS
 Prepared by the CG NAVCEN

Scale: 1:2,318,117

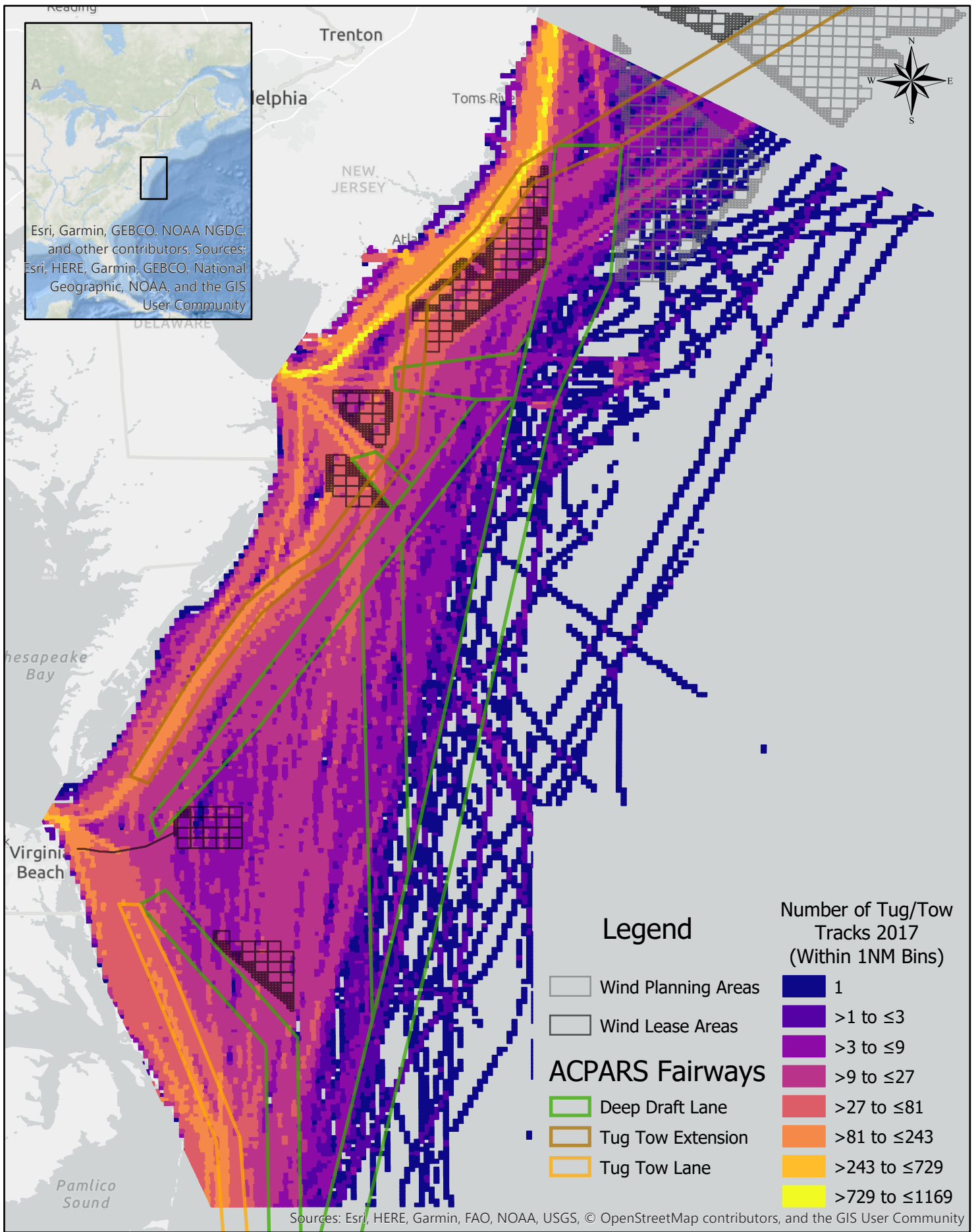




Coordinate System: GCS WGS 1984
 Datum: WGS 1984
 Units: Degree
 Data Source: NAIS
 Prepared by the CG NAVCEN

Scale: 1:2,318,117

0 12 24 48 72 96 Nautical Miles



Esri, Garmin, GEBCO, NOAA NGDC, and other contributors, Sources: Esri, HERE, Garmin, GEBCO, National Geographic, NOAA, and the GIS User Community

Legend

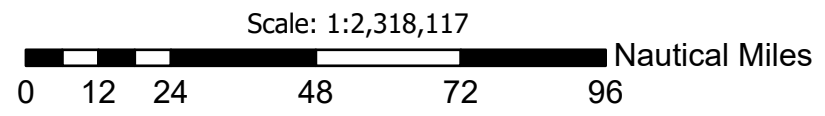
- Wind Planning Areas
- Wind Lease Areas
- ACPARS Fairways
 - Deep Draft Lane
 - Tug Tow Extension
 - Tug Tow Lane

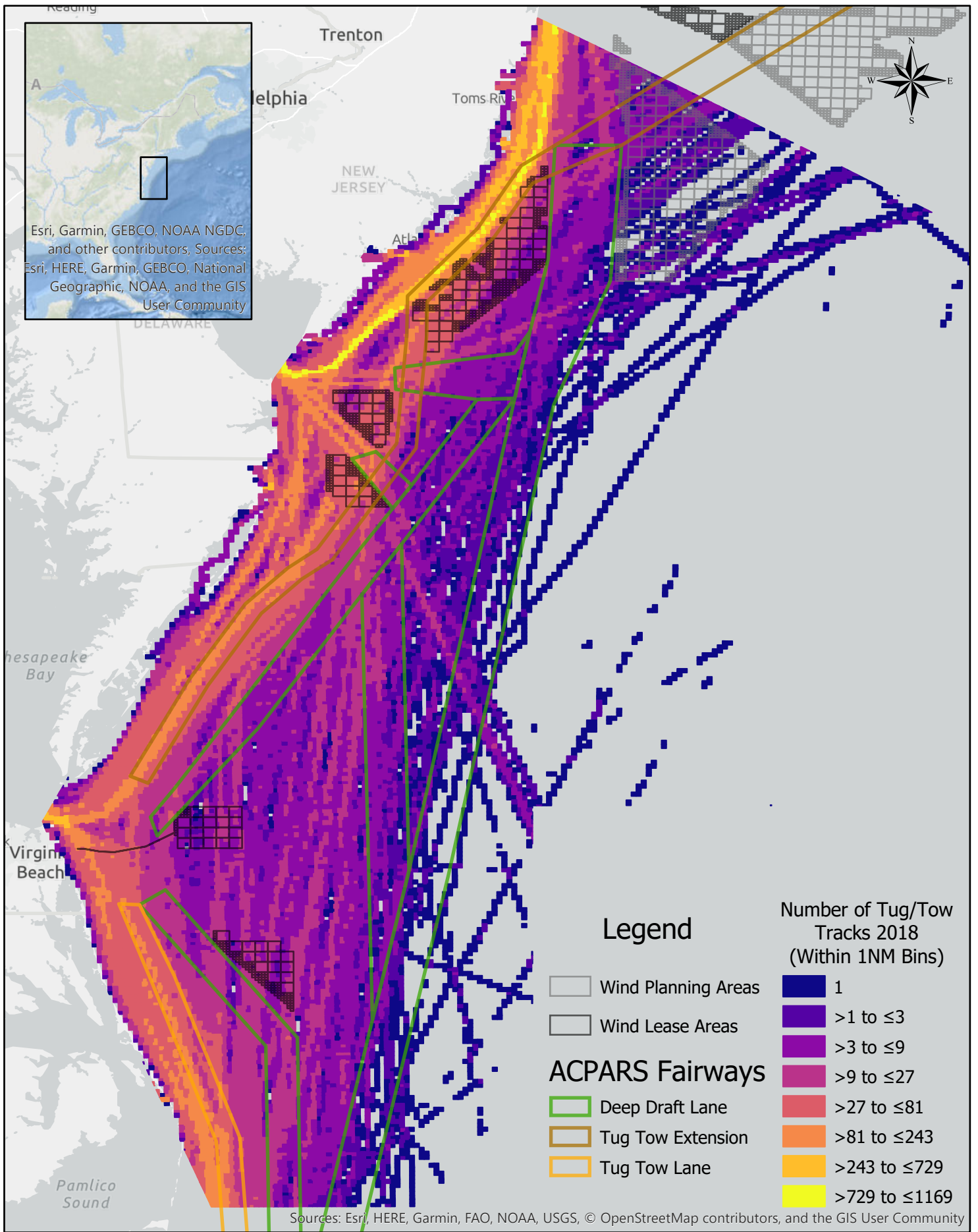
Number of Tug/Tow Tracks 2017 (Within 1NM Bins)

- 1
- >1 to ≤3
- >3 to ≤9
- >9 to ≤27
- >27 to ≤81
- >81 to ≤243
- >243 to ≤729
- >729 to ≤1169

Sources: Esri, HERE, Garmin, FAO, NOAA, USGS, © OpenStreetMap contributors, and the GIS User Community

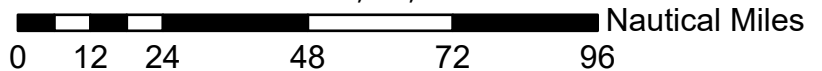
Coordinate System: GCS WGS 1984
 Datum: WGS 1984
 Units: Degree
 Data Source: NAIS
 Prepared by the CG NAVCEN

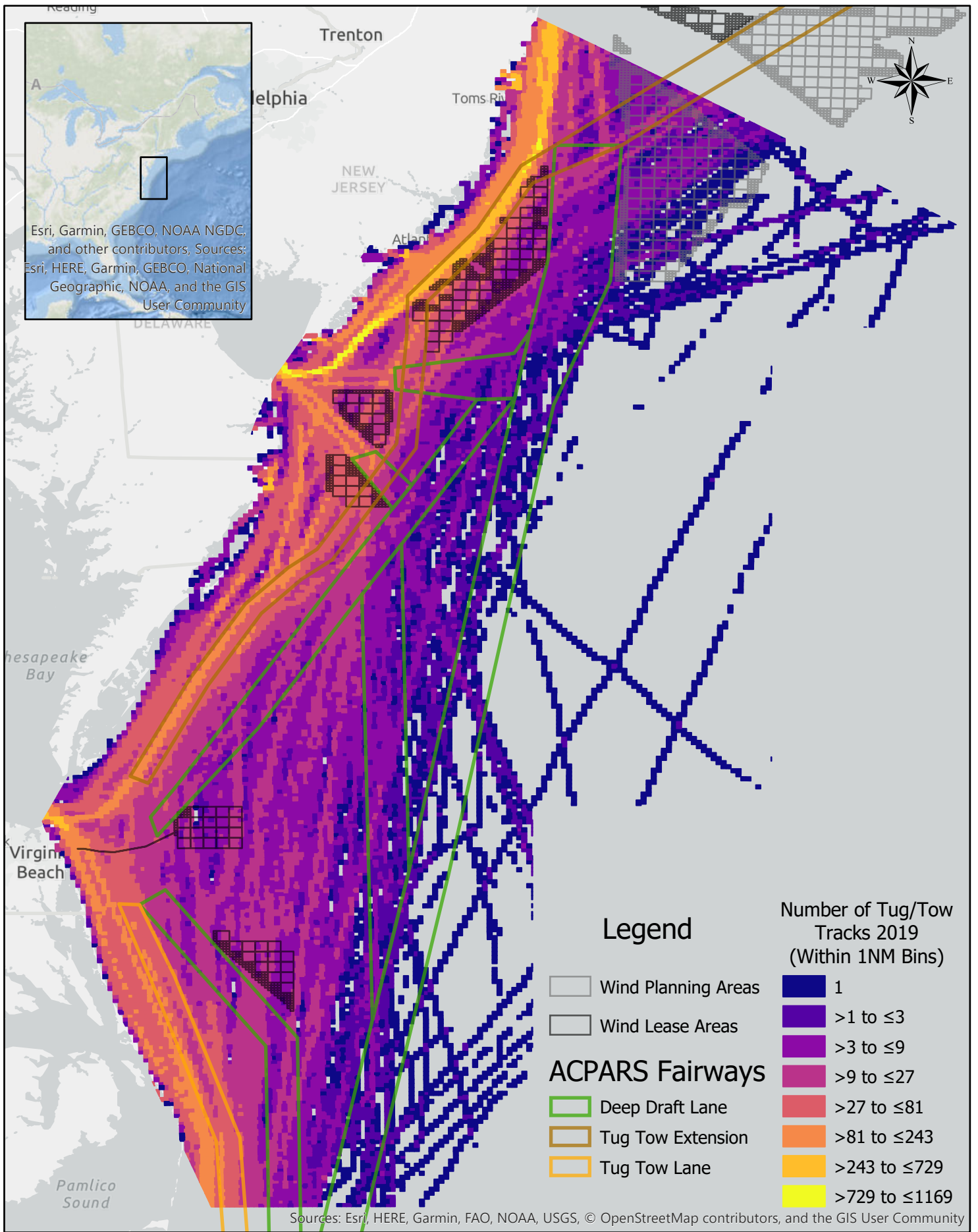




Coordinate System: GCS WGS 1984
 Datum: WGS 1984
 Units: Degree
 Data Source: NAIS
 Prepared by the CG NAVCEN

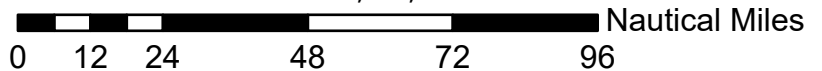
Scale: 1:2,318,117

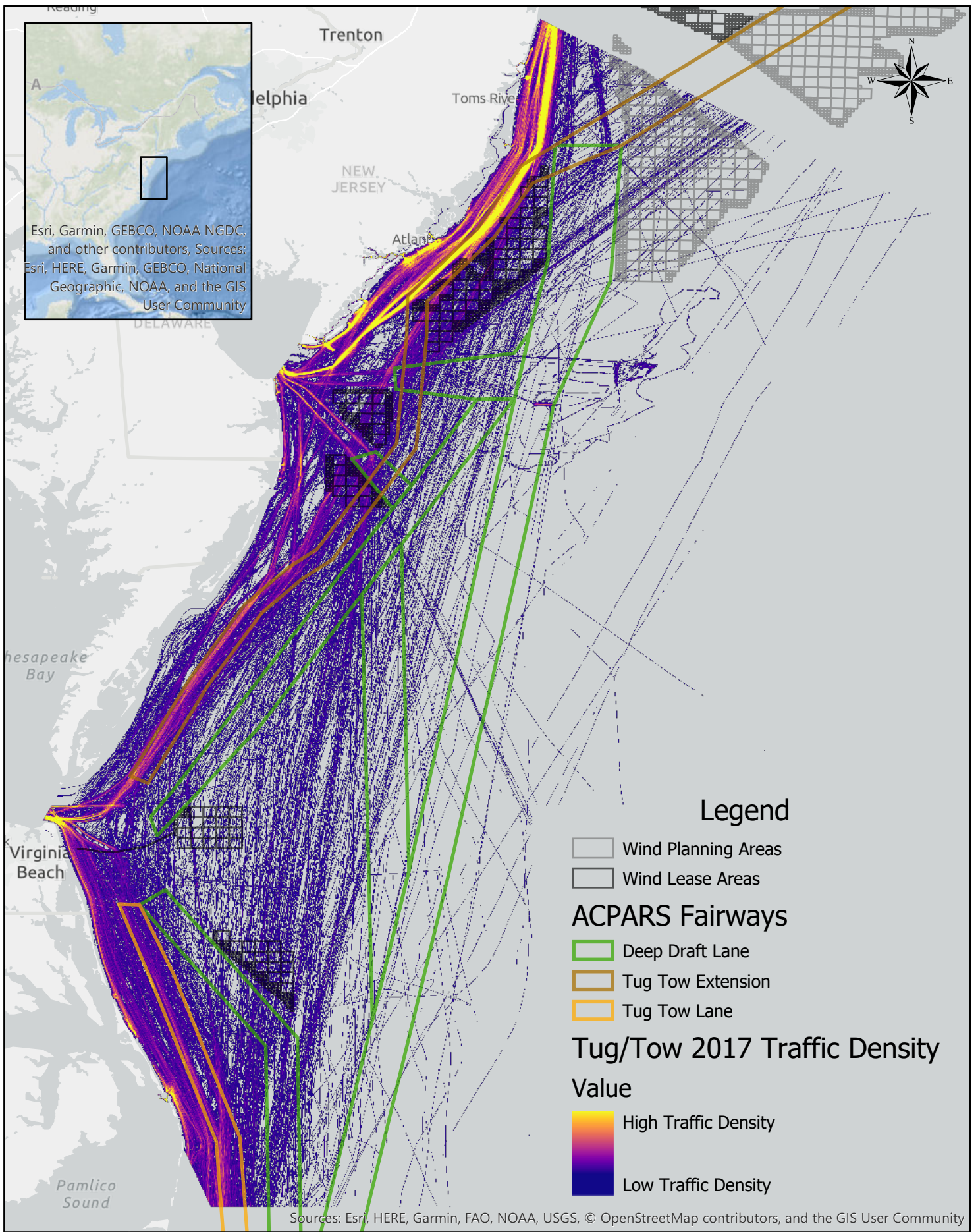




Coordinate System: GCS WGS 1984
 Datum: WGS 1984
 Units: Degree
 Data Source: NAIS
 Prepared by the CG NAVCEN

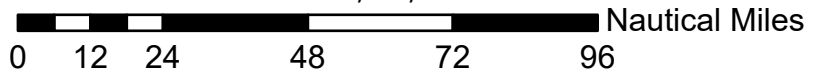
Scale: 1:2,318,117

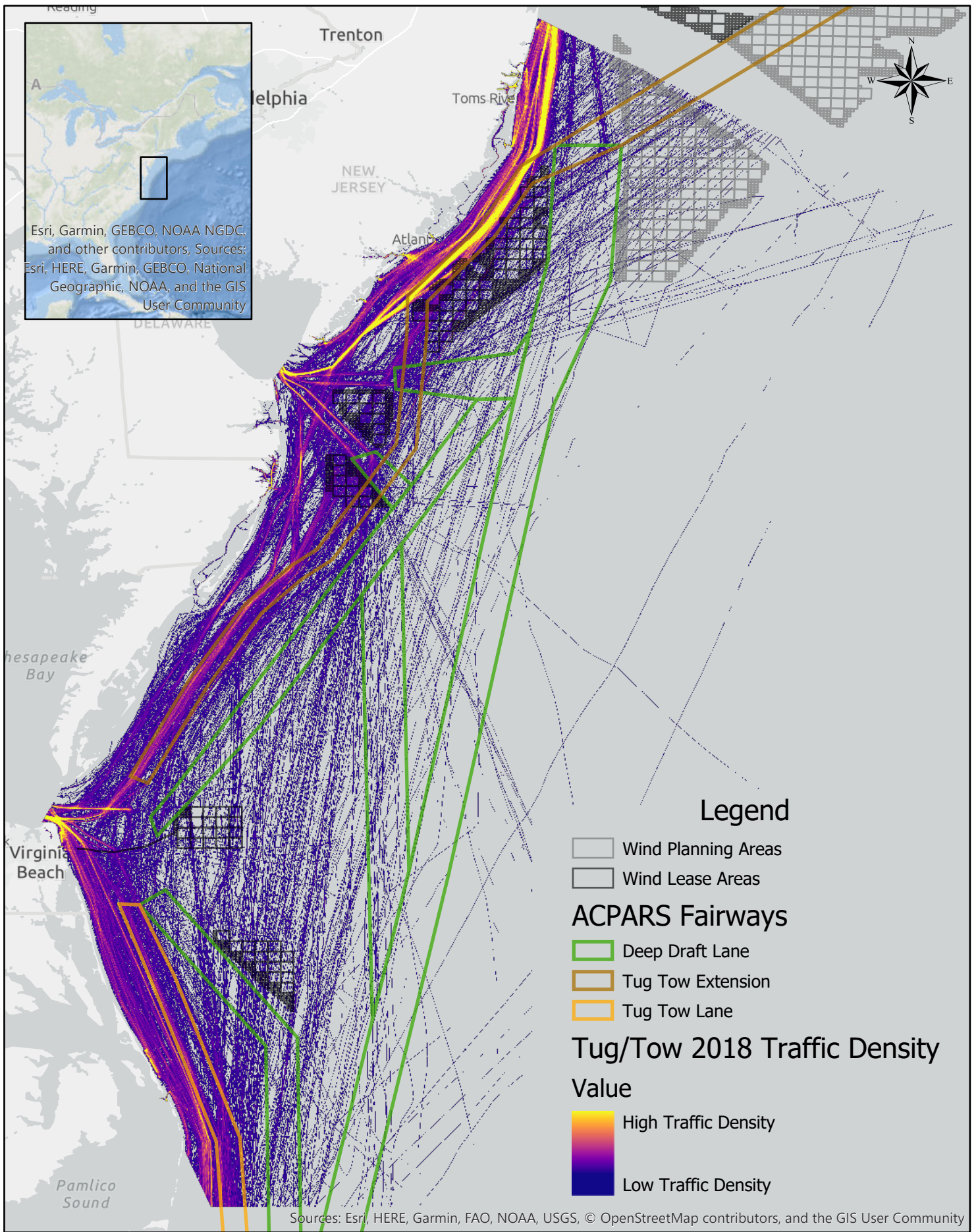




Coordinate System: GCS WGS 1984
 Datum: WGS 1984
 Units: Degree
 Data Source: NAIS
 Prepared by the CG NAVCEN

Scale: 1:2,318,117





Esri, Garmin, GEBCO, NOAA NGDC, and other contributors, Sources: Esri, HERE, Garmin, GEBCO, National Geographic, NOAA, and the GIS User Community

Legend

- Wind Planning Areas
- Wind Lease Areas

ACPARS Fairways

- Deep Draft Lane
- Tug Tow Extension
- Tug Tow Lane

Tug/Tow 2018 Traffic Density

Value

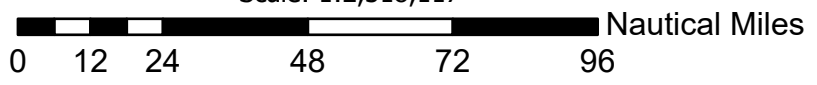
High Traffic Density

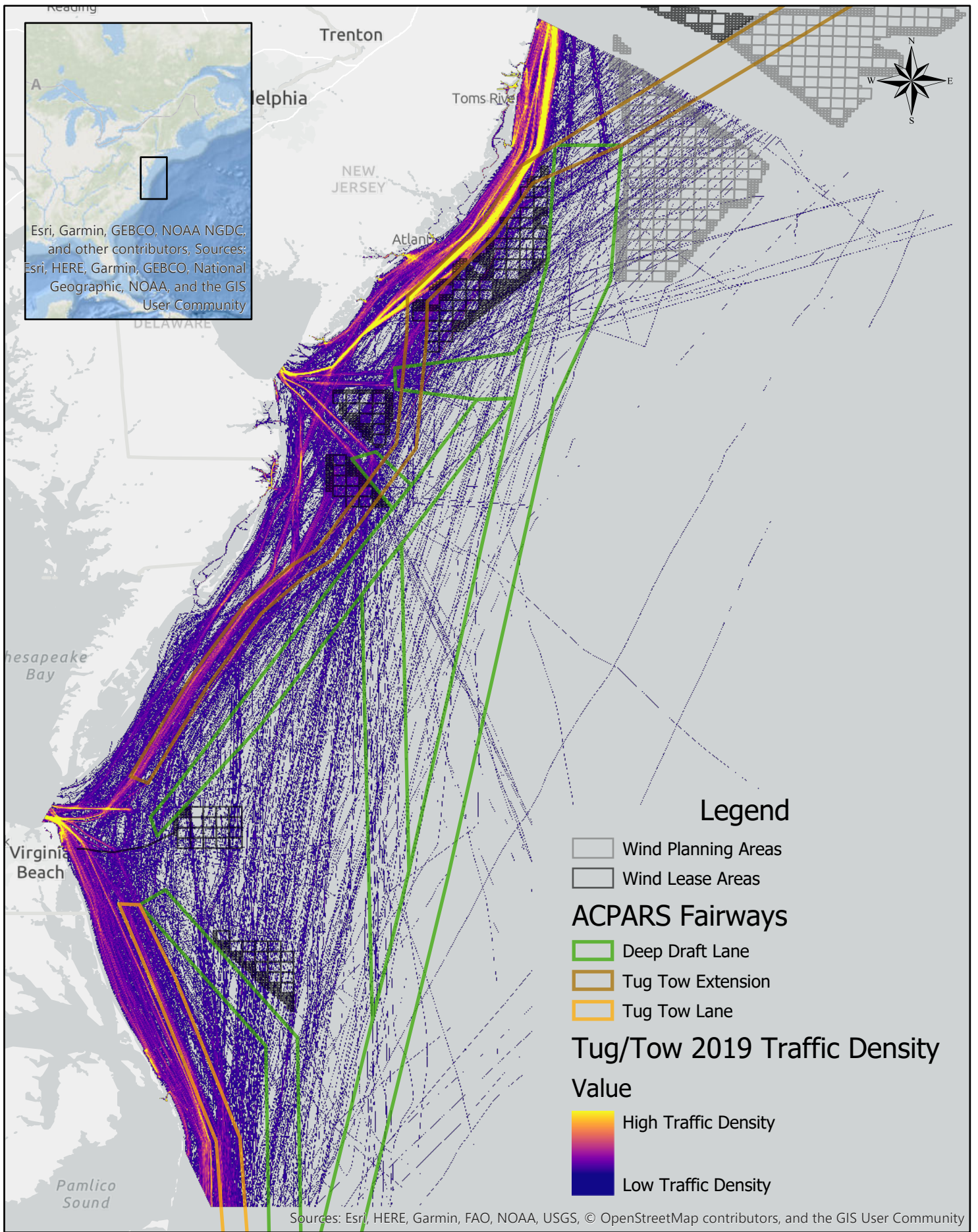
Low Traffic Density

Sources: Esri, HERE, Garmin, FAO, NOAA, USGS, © OpenStreetMap contributors, and the GIS User Community

Coordinate System: GCS WGS 1984
 Datum: WGS 1984
 Units: Degree
 Data Source: NAIS
 Prepared by the CG NAVCEN

Scale: 1:2,318,117





Coordinate System: GCS WGS 1984
 Datum: WGS 1984
 Units: Degree
 Data Source: NAIS
 Prepared by the CG NAVCEN

Scale: 1:2,318,117

